

# P-060

# Purgemeter

## GENERAL

P-060 series is an acryl molded Purgemeter with compact design. It is available in 2 kinds ; one is 105mm in full length and 22mm in width, and other 114mm long and 30mm wide. Smart, low price and optimum for the mass-production. Available with alarm contact.

## MAJOR APPLICATIONS

Water lines and Air / Nitrogen lines

## STANDARD SPECIFICATION

(In case Op.Press. is not 0MPa, consult factory for details)

Measuring object	Liquid (Water <Density 1.0 g/cm <sup>3</sup> and Viscosity 1.0 mPa·s>) Gas (Air or Nitrogen)	
Scale range	Water	Small flow rate type (Body code A) Min. range: 10 ~ 100 mL/min Max. range: 0.3 ~ 3 L/min
		Large flow rate type (Body code B) Min. range: 0.3 ~ 3 L/min Max. range: 1 ~ 10 L/min
	Gas (Air/ Nitrogen)	Small flow rate type (Body code A) Min. range: 0.2 ~ 2 L/min (nor) Max. range: 5 ~ 50 L/min (nor)
		Large flow rate type (Body code B) Min. range: 5 ~ 50 L/min (nor) Max. range: 30 ~ 300 L/min(nor)
Rangeability	10:1 10:2 occasionally	
Accuracy	±5 % F.S.	
Max. Op. Press.	0.5 MPa	
Max. Op. Temp.	50 °C	
Material	Std.	
Body	PMMA	
Float	SUS304/PTFE/Glass/Ruby	
Packing	NBR	
Cap	POM	
Joint	SUS304	
Scale plate	Polycarbonate	
Lock-nut	POM	Not attached to small flow rate type
Connection	Std.	(Small flow rate type) Rc1/8 (Large flow rate type) Rc3/8
	Opt.	Rc1/4
Mounting	Std.	(Small flow rate type) Thread mount onto panel front (Large flow rate type) Lock-nut mounting onto panel front
	Mass (Std.type)	(Small flow rate type) 95 g (Large flow rate type) 120 g

## ALARM OUTPUT

Type	Availability	Reference pages
Reed switch type alarm unit CE, UL Version PAU optical alarm unit	○ ×	50, 51 page

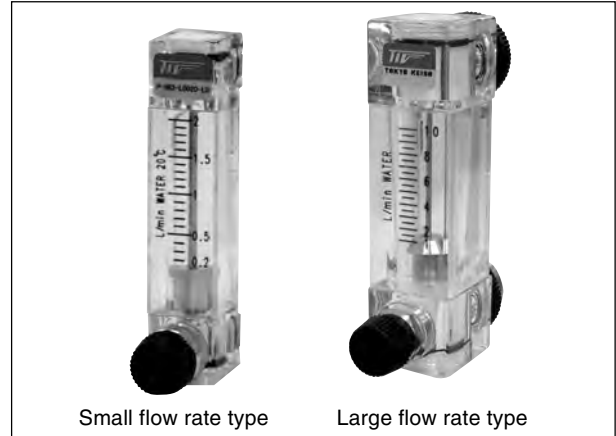
## STANDARD FLOW RATE TABLE

(In case Op. Press at gas is not 1 atm, consult factory for details.)

	In case alarm output code is 0		In case alarm output code is A to D					
	Air or N <sub>2</sub> 0 MPa (1atm), 20 °C	Water	Air or N <sub>2</sub> 0 MPa (1atm), 20 °C	Alarm setting range	Water	Alarm setting range		
Small flow rate type	0.2-2 L/min (nor)	10-100 mL/min	/	/	/	/		
	0.5-5 L/min (nor)	40-400 mL/min						
	1-10 L/min (nor)	0.1-1 L/min					0.1-1 L/min	0.2-0.8 L/min
	2-20 L/min (nor)	0.2-2 L/min					0.2-2 L/min	0.4-1.6 L/min
	3-30 L/min (nor)	0.5-2.5 L/min					0.5-2.5 L/min	0.5-2 L/min
Large flow rate type	5-50 L/min (nor)	0.3-3 L/min	5-50 L/min (nor)	10-40 L/min (nor)	0.3-3 L/min	0.6-2.4 L/min		
	5-50 L/min (nor)	0.3-3 L/min	5-50 L/min (nor)	10-40 L/min (nor)	0.3-3 L/min	0.6-2.4 L/min		
	10-100 L/min (nor)	0.5-5 L/min	10-100 L/min (nor)	20-80 L/min (nor)	0.5-5 L/min	1-4 L/min		
	20-200 L/min (nor)	1-10 L/min	20-200 L/min (nor)	40-160 L/min (nor)	1-10 L/min	2-8 L/min		
	30-300 L/min (nor)	/	30-300 L/min (nor)	60-240 L/min (nor)	/	/		

## ORDERING INFORMATION

Basic model code	Designation items for detailed specifications
P-062-□□□□□-□□-□□□	No designation
(Use model code table for selection)	



## MODEL CODE (BODY CODE: A)

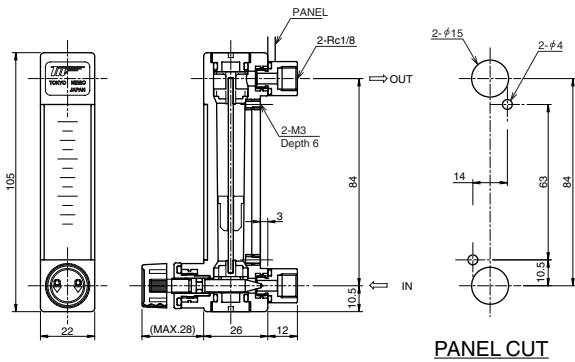
	FLOW DIRECTION	FLUID	SCALE RANGE	VALVE	ALARM	CONNECTION	BODY CODE	EXAMPLE	DESCRIPTION
P-06	2	-L	0 0 0 1	-L	0	-R1	A		Small flow rate type (Width 22 mm, Length 105 mm)
								R1	Rc1/8 (Body code A ... Std.)
								R2	Rc1/4
								0	Not provided
								A	Reed switch alarm (LO)
								B	Reed switch alarm (LC)
								C	Reed switch alarm (HO)
								D	Reed switch alarm (HC)
								0	Not provided
								L	Lower side
			0 0 0 1						Water : 100 mL/min
			0 0 0 4						" 400 mL/min
			0 0 1 0						" 1 L/min
			0 0 2 0						" 2 L/min
			0 0 2 5						" 2.5 L/min
			0 0 3 0						" 3 L/min
			0 0 2 0						Air or N <sub>2</sub> : 2 L/min (nor)
			0 0 5 0						" 5 L/min (nor)
			0 1 0 0						" 10 L/min (nor)
			0 2 0 0						" 20 L/min (nor)
			0 3 0 0						" 30 L/min (nor)
			0 5 0 0						" 50 L/min (nor)
			L						Water
			A						Air
			N						Nitrogen
			Z						Special (Liquid/Gas)
	2								Bottom rear → Top rear

## MODEL CODE (BODY CODE: B)

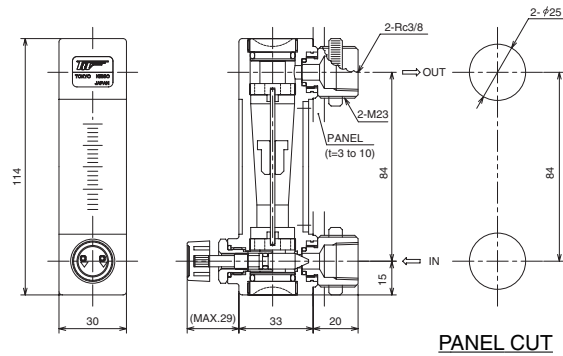
	FLOW DIRECTION	FLUID	SCALE RANGE	VALVE	ALARM	CONNECTION	BODY CODE	EXAMPLE	DESCRIPTION
P-06	2	-L	0 0 3 0	-L	0	-R3	B		Large flow rate type (Width 30 mm, Length 114 mm)
								R2	Rc1/4
								R3	Rc3/8 (Body code B ... Std.)
								0	Not provided
								A	Reed switch alarm (LO)
								B	Reed switch alarm (LC)
								C	Reed switch alarm (HO)
								D	Reed switch alarm (HC)
								0	Not provided
								L	Lower side
			0 0 3 0						Water : 3 L/min
			0 0 5 0						" 5 L/min
			0 1 0 0						" 10 L/min
			0 5 0 0						Air or N <sub>2</sub> : 50 L/min (nor)
			1 0 0 0						" 100 L/min (nor)
			2 0 0 0						" 200 L/min (nor)
			3 0 0 0						" 300 L/min (nor)
			L						Water
			A						Air
			N						Nitrogen
			Z						Special (Liquid/Gas)
	2								Bottom rear → Top rear

## DIMENSIONS

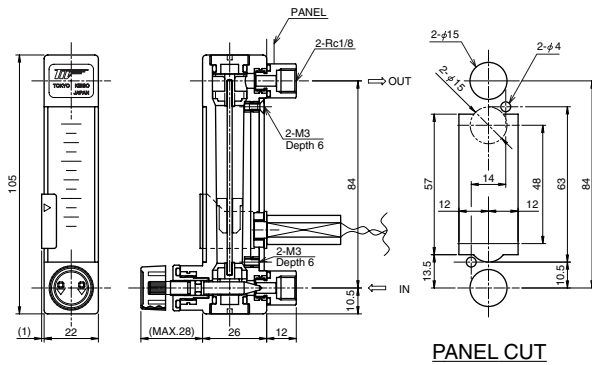
### ● Body code A Standard type (Connection size Rc1/8)



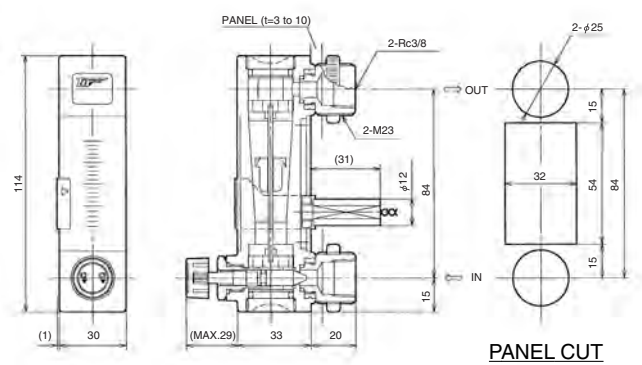
### ● Body code B Standard type (Connection size Rc3/8)



### ● Body code A (Connection size Rc1/8 with alarm)



### ● Body code B (Connection size Rc3/8 with alarm)



#### <Note>

A magnet is set in the float. In case of the short distance to mount reed switch, they interfere each other, and it may happen that the rate of flow can not be indicated accurately. Contact the factory if the distance to mount is less than 50mm.

### ● Standard Material

Parts name	Standard material	Available material
Body	○ PMMA	—
Float *	○ SUS304/PTFE/Glass/Ruby	—
Valve	○ SUS304	—
Needle	○ SUS304	—
Cap	○ POM	—
Packing	○ NBR	—
Joint	○ SUS304	—
Scale plate	Polycarbonate	—

Parts with "○" touch the measuring fluid.  
 \*: Proper material is to be selected, depending on specifications.  
 SUS316 instead of SUS304 may be used, due to certain production reasons.  
 Material like ASTM, or AIS equivalent to JIS material may be used due to certain production reasons.